

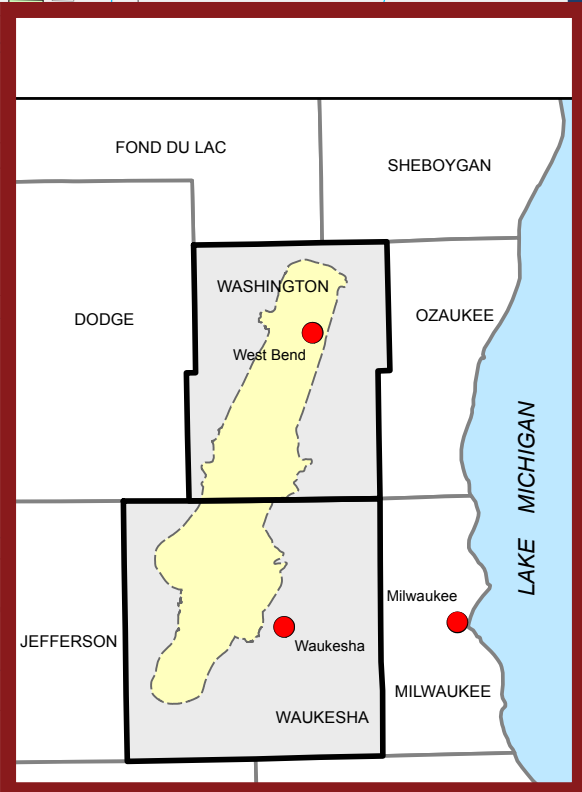
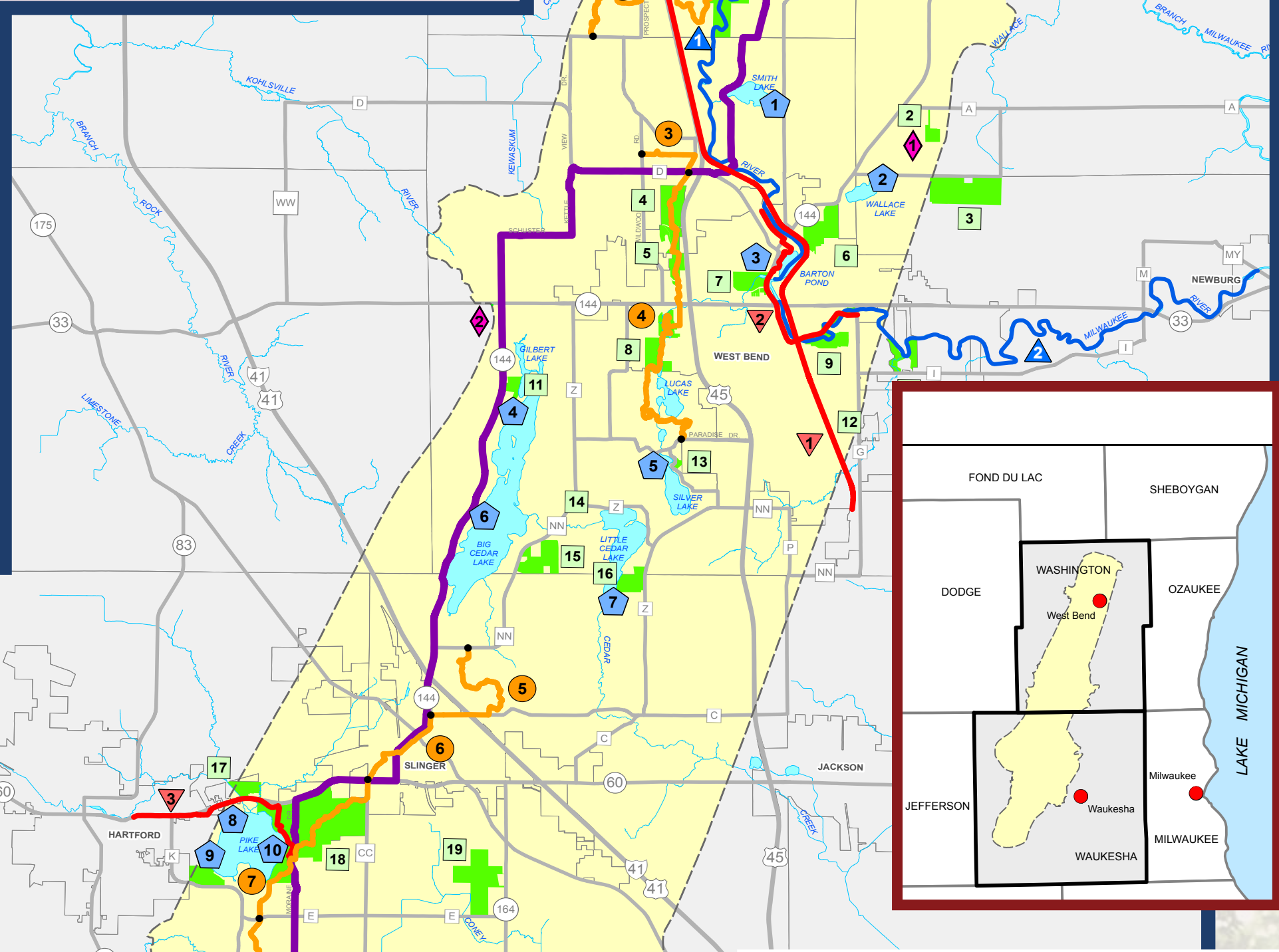
Mid Kettle Moraine Outdoor Recreation Guide

A project of the
Mid Kettle
Moraine
Partners

A coalition of non-profit conservation organizations, local governments, state & regional agencies and individuals advocating preservation and education of the natural, scenic and geologic features of the unprotected Mid Kettle Moraine region located between the North and South Units of the Kettle Moraine State Forest in Washington and Waukesha Counties. To learn more visit us at: midkettlemorainepartners.weebly.com

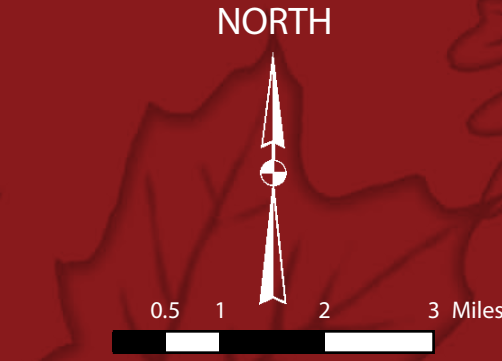
SUPPORTER OF THE MID KETTLE MORaine

NATURAL AREAS • PARKS • ICE AGE TRAIL • MULTI-USE TRAILS • HISTORICAL MARKERS • RUSTIC ROADS • RIVER ROUTES • LAKE ACCESSES



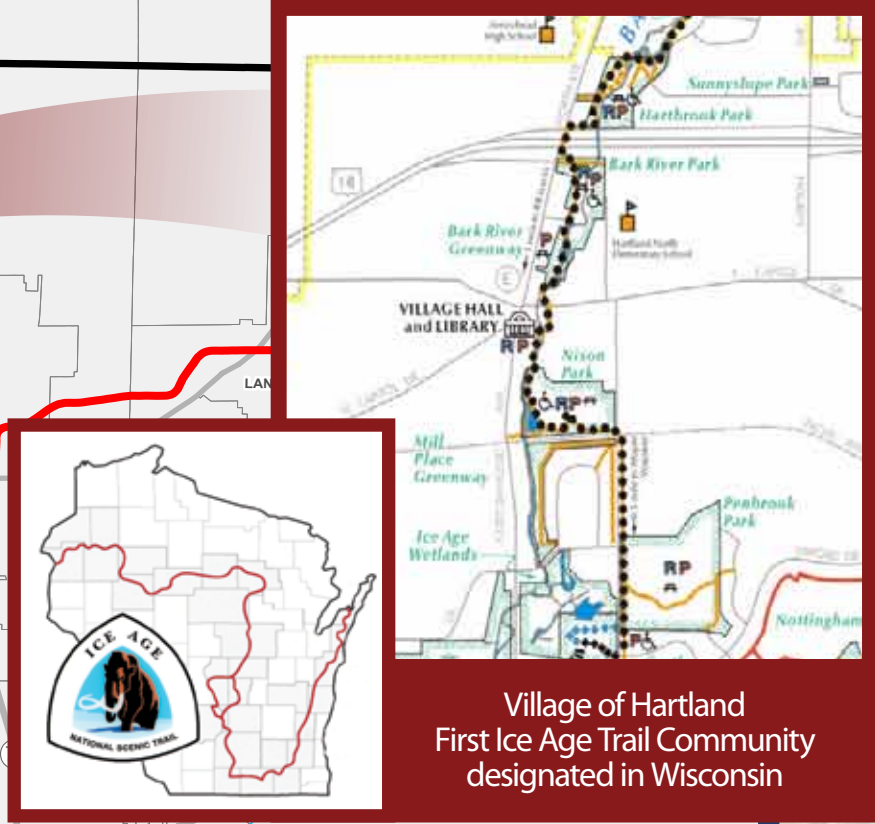
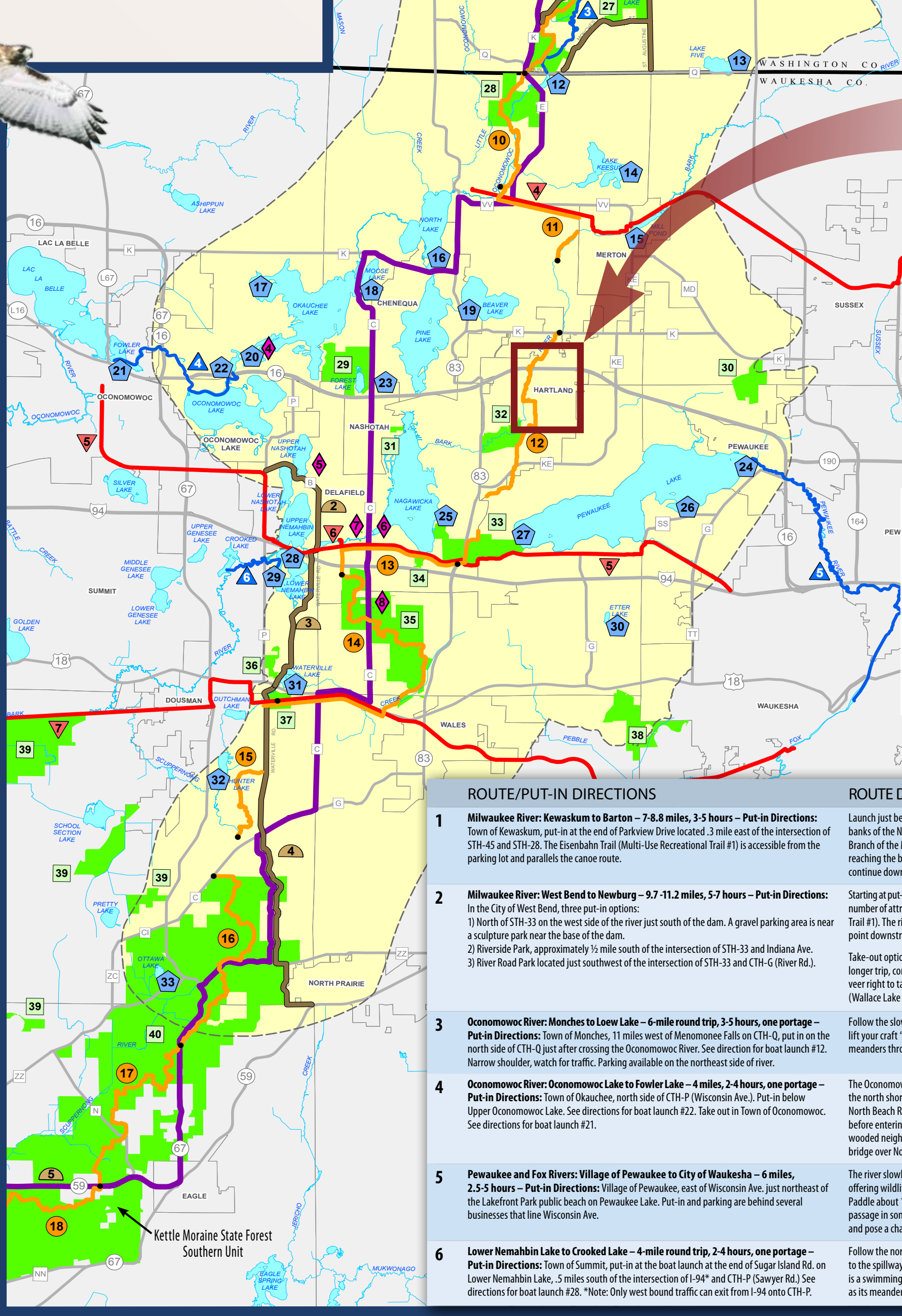
- ### Multi-Use Recreational Trails
- TRAIL/FEATURES**
- Eisenbahn Trail – 25 miles** – Traveling north to south, the trail begins in the town of Eden just west of the intersection of Main St. and Fond Du Lac Ave. and passes through the cities of Campbellsport, Kewaskum and West Bend before ending at Rusco Drive in southern West Bend. Southern 5 miles are asphalt, remaining 20 miles are crushed gravel. Open for walking, biking and in-line skating. Leashed pets permitted. Snowmobiles and winter ATV use permitted on certain sections (ATV use is on a trial basis).
 - West Bend Riverwalk – 4 miles** – Traveling north to south, the trail begins in West Bend just southeast of the intersection of Roosevelt Dr. and Taylor Ln. and follows the Milwaukee River to the northeast corner of Quaes Creek Park. Open for walking, jogging, biking, and in-line skating. This trail features six West Bend parks beginning with Riverfront Parkway in the north followed by Regner Park, Old Settlers Park, Veterans Memorial Park, Riverside Park, and finally Quaes Creek Park in the south.
 - Pike Lake Bike Trail – 3 miles** – Traveling west to east, the trail begins in Hartford at the intersection of E. Sumner St. and S. Wilson Ave. and travels southeast along STH-60 before entering the Pike Lake Unit of the Kettle Moraine State Forest. Open for walking, jogging, and biking.
 - Bug Line – 16 miles** – Traveling east to west, the paved asphalt trail begins in Menomonee Falls just southeast of the intersection of Appleton Ave. and Shady Ln. and then passes through the villages of Lannon, Sussex and Merton before ending in North Lake in the Town of Merton. Open for walking and biking. Snowmobiles and horses permitted on certain sections. Leashed pets permitted. Just west of CTH-Y a paved spur trail connects with an extensive trail system in Waukesha County's Menomonee Park.
 - Lake Country Trail – 16 miles** – Traveling east to west, the trail begins in Pewaukee at the Landsberg Center Trailhead (restrooms available) located on Golf Rd. 1 mile west of the intersection of I-94 and CTH-T (N. Grandview Blvd.) and ends in Roosevelt Park in the City of Oconomowoc. Passes through the city of Delafield and shares the same path as the Ice Age Trail between STH-83 and Cushing Park Rd. Open for walking, biking, in-line skating, and cross-country skiing.
 - Cushing Park Connector Trail – 2.3 miles** – Traveling north to south, the off-road paved trail connects the Lake Country Trail at the north end of Lapham Peak State Park to the Glacial Drumlin Trail south of STH-18. The trail runs along the east side of Cushing Park Road then crosses to the west side further south before meeting STH-18. The trail also provides entry into the Lapham Peak Unit trails of the Kettle Moraine State Park as well as the Ice Age Trail. Parking and restrooms are available at Cushing Memorial Park which is 0.1 miles north of Main Street or at the Lapham Peak Unit. Open for biking, hiking, running, and cross-country skiing.
 - Glacial Drumlin Trail – 52 miles** – Traveling east to west, the trail begins in Waukesha at the Fox River Sanctuary northwest of the intersection of College Ave. and Prairie Ave. and continues west to Cottage Grove in Dane County. First 13 miles are paved; the remaining miles are mostly crushed limestone. Walkers and joggers can use the trail for free. Bikers, in-line skaters, snowmobilers, and cross-country skiers 16 years of age or older must purchase a trail pass, available from many local bicycle shops. Snowmobiles not permitted on the trail section within the Mid Kettle Moraine.

- ### MAP SYMBOLS
- Ice Age Trail
 - Multi-Use Recreational Trails
 - Canoe/Kayak Routes
 - Rustic Roads & Scenic Drives
 - Natural Areas & Parks
 - Boat Launches
 - Historical Markers
 - Ice Age Trail
 - Multi - Use Recreational Trails
 - Canoe Routes
 - Rustic Roads
 - Kettle Moraine Scenic Drive
 - Natural Areas and Parks
 - Mid-Kettle Moraine Area
 - Interstate Highways
 - U.S. Highways
 - State Highways
 - Selected County Highways
 - Selected Local Roads
 - Rivers and Streams
 - Lakes
 - Municipal Boundary



Map prepared by the Southeast Wisconsin Regional Planning Commission. The data shown on this map has been obtained from various sources, and is of varying age, reliability, and resolution. This map is not intended to be used for navigation, nor is the map an authoritative source of information about legal land ownership or public access.

Photos courtesy of Allen Curtes and Jay Curtes.
Editing by Grounded, Inc.
Printing by K-Kom, Inc.



- ### ROUTE/PUT-IN DIRECTIONS
- Milwaukee River: Kewaskum to Barton – 7-8.8 miles, 3-5 hours – Put-in Directions:** Town of Kewaskum, put-in at the end of Parkview Drive located 3 mile east of the intersection of STH-45 and STH-28. The Eisenbahn Trail (Multi-Use Recreational Trail #1) is accessible from the parking lot and parallels the canoe route.
 - Milwaukee River: West Bend to Newburg – 9.7-11.2 miles, 5-7 hours – Put-in Directions:** In the City of West Bend, three put-in options:
1) North of STH-33 on the west side of the river just south of the dam. A gravel parking area is near a sculpture park near the base of the dam.
2) Riverside Park, approximately 1/2 mile south of the intersection of STH-33 and Indiana Ave.
3) River Road Park located just southwest of the intersection of STH-33 and CTH-G (River Rd.).
 - Oconomowoc River: Monches to Loew Lake – 6-mile round trip, 3-5 hours, one portage – Put-in Directions:** Town of Monches, 11 miles west of Menomonee Falls on CTH-Q, put-in on the north side of CTH-Q just after crossing the Oconomowoc River. See direction for boat launch #12. Narrow shoulder, watch for traffic. Parking available on the northeast side of river.
 - Oconomowoc River: Oconomowoc Lake to Fowler Lake – 4 miles, 2-4 hours, one portage – Put-in Directions:** Town of Okauchee, north side of CTH-P (Wisconsin Ave.). Put-in below Upper Oconomowoc Lake. See directions for boat launch #22. Take out in Town of Oconomowoc. See directions for boat launch #21.
 - Pewaukee and Fox Rivers: Village of Pewaukee to City of Waukesha – 6 miles, 2.5-5 hours – Put-in Directions:** Village of Pewaukee, east of Wisconsin Ave. just northeast of the Lakefront Park public beach on Pewaukee Lake. Put-in and parking are behind several businesses that line Wisconsin Ave.
 - Lower Nemahlin Lake to Crooked Lake – 4-mile round trip, 2-4 hours, one portage – Put-in Directions:** Town of Summit, put-in at the boat launch at the end of Sugar Island Rd. on Lower Nemahlin Lake, .5 miles south of the intersection of I-94* and CTH-P (Sawyer Rd.). See directions for boat launch #28. *Note: Only west bound traffic can exit from I-94 onto CTH-P.
- ### ROUTE DESCRIPTION
- Launch just below the mill pond dam. The river runs mostly southeast past a country club and then eventually into the forested banks of the Northern Unit of the Kettle Moraine State Forest to the bridge at CTH-H approximately 2 miles downstream. The East Branch of the Milwaukee River enters just north of CTH-H. The river then turns south and meanders past farms and forests before reaching the bridge at CTH-D (Lighthouse Ln.). Take-out just before the bridge on the east side of the river for a 7 mile trip, or continue downstream for another 1.8 miles to an east side take-out just above the Barton Dam.
- Starting a put-in option 1: Paddle 1 mile through historic West Bend on narrow waters with many riffles to the Riverside Park put-in. A number of attractive footbridges are noted overhead, including an old train bridge that is now part of the Eisenbahn Trail (Multi-Use Trail #1). The river now meanders through grassland and willow thickets for another 1.2 miles to the River Road put-in. From this point downstream the river's banks are wooded with occasional high banks, numerous oxbow turns, and frequent riffles.
- Take-out option 1, for a 9.7 mile trip, is just past the CTH-M bridge at Goeden Park. Parking and restrooms are available. For a longer trip, continue downriver for another 1.5 miles to the dam in Newburg. Stay left before the dam due to shallow waters, then veer right to take-out along the grassy bank upstream of the dam's concrete walls. Portage to the parking area across CTH-MY (Wallace Lake Rd.) and along the southeast side of the river. Restrooms are near the ballpark.
- Follow the slow moving river upstream for approximately three miles to Loew Lake. Depending on water levels, you may need to lift your craft "up-and-over" a low farm bridge one mile upstream. This is a very scenic trip with a northwoods feel as the river meanders through wetlands and woodlands with many wildlife viewing opportunities.
- The Oconomowoc River flows for 1 mile before entering Oconomowoc Lake. Be alert for power boats heading upstream. Follow the north shore of the lake west for about 1 mile to where the river outlets the lake. There is a small dam just past the bridge over North Beach Rd. A 10 yard portage trail is on the river's east side. The river then flows under several bridges, including Hwy 16, before entering a large marsh. About a mile downstream the scenery changes as the river begins winding through secluded wooded neighborhoods in the City of Oconomowoc. The take out is on the south side of Fowler Lake about .3 miles beyond the bridge over North Oakwood Ave. See directions for boat launch #21.
- The river slowly meanders through the Village of Pewaukee, passing under several bridges, and then past extensive wetlands offering wildlife viewing opportunities. The Pewaukee River joins the Fox River just south of the intersection of I-94 and STH-164. Paddle about 1.5 miles down the Fox River to take out in the City of Waukesha's Frame Park. Extremely low water will make passage in some areas difficult. High water can make the Pewaukee River impassable where it enters a long culvert under I-94, and pose a challenge at a rocky chute at a private bridge just upstream of STH-164.
- Follow the northwest shore for about 1/4 mile to a channel formed by the Bark River. Follow the channel downstream for 1/3 mile to the spillway at CTH-P (Sawyer Rd.). You will need to get out of your boat to ease it over the spillway. The area below the bridge is a swimming hole for local residents. The water in the Bark River is usually very clear. The rest of the route follows the Bark River as it meanders through cattail marshes to Crooked Lake.

Mid Kettle Moraine Outdoor Recreation Guide

Numbered locations in the tables below correspond to map numbers on the map

Lake Accesses

LAKE	DIRECTIONS	FEE	ACCESS/FEATURES
Washington County			
1	Smith Lake	From West Bend at intersection of USH-45 and CTH-D, east .1 miles to Lighthouse Ln., east .3 miles to junction with Newark Dr., east to Salisbury Rd. and then north 1 mile to Sportsman Ln. West to launch at the end of Sportsman Ln.	No Gravel Ramp
2	Wallace Lake	From West Bend at intersection of USH-45 and STH-33/144, east on STH-33 1 mile to junction with North Main St. (STH- 144), north on Main St. one mile to junction with Barton Ave. (STH-144), east on Barton Ave. 7 miles to Wallace Lake Rd., east on Wallace Lake Rd. .5 miles to River Rd. North to launch at the end of River Rd.	No Gravel Ramp
3	Barton Pond	From West Bend at intersection of USH- 45 and STH-33/144, east on STH-33 1 mile to junction with N. Main St./ STH-144, north on Main St. 4 miles to parking on east side of road in Kuester Island Park.	No Walk-in
4	Big Cedar Lake #1	West of West Bend at intersection of USH-45 and STH-33, east on STH-33 3.7 miles to STH 144, south on STH-144 1.7 miles to Gonring Dr., east to end of Gonring Dr.	Yes Concrete Ramp
5	Silver Lake	South of West Bend at intersection of USH-45 and Paradise Dr., west on Paradise Dr. 1 mile to Peter's Dr., south on Peter's Dr. .3 miles to launch in Henschke Hillside Lake Access Park.	Yes Concrete Ramp (rest rooms)
6	Big Cedar Lake #2	Between Hartford & West Bend at intersection of USH-41 and CTH-K, east on CTH-K to junction with STH-144, north .5 miles to Boettcher Dr., northeast on Boettcher Dr. .5 miles to Cedar Park Dr. to launch.	No Gravel Ramp
7	Little Cedar Lake	South of West Bend at intersection of USH-45 and CTH-PV (Pleasant Valley Rd.), west on CTH-PV 1.5 miles to CTH-Z, north on CTH-Z .9 miles to west side entrance into Ackerman's Grove County Park . Launch is in park.	Yes Concrete Ramp (rest rooms)
8	Pike Lake #1	East of Hartford at intersection of USH-41 and STH-60, west on STH-60, .5 miles to junction with Pike Lake Rd., southeast to High Rd., east on High Rd..5 miles to 2st St. Launch is at end of 2nd St. No parking but free parking is available at several local businesses or in Pike Lake State park.	Yes Concrete Ramp
9	Pike Lake #2	East of Hartford at intersection of USH-41 and STH-60, west on STH-60, .5 miles to junction with Pike Lake Rd., southeast to High Rd., east on High Rd..5 miles to 2st St. Launch is at end of 2nd St. No parking but free parking is available at several local businesses or in Pike Lake State park.	No* Concrete Ramp *Vehicle admission sticker required.
10	Pike Lake #3	East of Hartford at intersection of USH-41 and STH-60, west on STH-60, .35 miles to Kettle Moraine Rd., south on Kettle Moraine Rd. about 1 mile to the beach and picnic area for the Pike Lake Unit of the Kettle Moraine State Forest. Launch is near the beach.	No* Walk-in *Vehicle admission sticker required and available for purchase in park.
11	Friess Lake/Little Friess Lake-Wild Marsh Landing	In Richfield, at the intersection of STH 167 and Friess Lake Road, go .7miles south to Lake Drive and go east for .2 miles. Boat Launch will be on the east side of the road. A channel connects to Friess Lake.	Yes Concrete Ramp
12	Loew Lake	From Menomonee Falls at the intersection of USH-41/45 and CTH-Q (County Line Rd.), go west on CTH-Q .11 miles to the launch on the north side of the road next to the Oconomowoc River in the Town of Monches. Portage over a small bridge 1 mile upriver. Loew Lake is 2 miles upriver. Parking on east side of river just north of CTH-Q.	No Walk-in (portage). Launch/river suitable for small trailers & shallow craft only.
13	Lake Five	From Menomonee Falls at the intersection of USH-41/45 and CTH-Q (County Line Rd.), west on CTH-Q 7.5 miles to private boat rental business located right on the lake.	Yes Boat Livery
Waukesha County			
14	Keesus Lake	From Merton at the intersection of CTH-VV and CTH-EF, north on CTH-VV 1 mile to Keesus Rd., north .5 miles to Woodrest Dr. Launch is .1 miles west on Woodrest Dr. Parking at intersection of Keesus Rd. and Woodrest Dr.	Yes Concrete Ramp
15	Merton Mill Pond	From the Village of Merton at the intersection of CTH-VV and CTH-EF, north on CTH-VV .5 miles to launch on east side of road.	No Gravel Ramp
16	Pine Lake	West of Hartland at the intersection of STH-16 and STH-83, north on STH-83 3 miles to second junction with CTH-K, west on CTH K .5 miles to launch.	Yes Concrete Ramp
17	Okauchee Lake #1	East of the Town of Oconomowoc at the intersection of STH-16 and Brown St. (CTH-P), north on Brown St. .1 miles to east side intersection with CTH-P (Wisconsin Ave.) East approximately .5 miles to Rd. T. Launch at end of road.	No Concrete Ramp
18	Moose Lake	East of Oconomowoc at the intersection of STH-16 and CTH-C, north on CTH-C for about 2 miles. Watch for DNR sign to launch entrance on east side of road across from Cedar Bay Rd.	No Blacktop Ramp
19	Beaver Lake	West of Hartland at the intersection of STH-16 and STH-83, north on STH-83 2 miles to launch entrance on the east side of the road.	No Walk-in
20	Okauchee Lake #2	East of Oconomowoc at the intersection of STH-16 and Sawyer Rd. (CTH-P), north on Sawyer Rd. to junction with Wisconsin Ave. (CTH-P), west on Wisconsin Ave. to intersection with West Lake Dr. in the town roundabout, west .1 miles on West Lake Dr. to Lacy's Ln. Launch at private business at end of Lacy's Ln.	Yes Concrete Ramp
21	Fowler Lake	Downtown, in Oconomowoc at the intersection of STH-16 (Wisconsin Ave.) and St. Paul St., north on St. Paul St. .1 mile to city parking lot behind City Hall. Launch is at the north end of lot.	Yes Concrete Ramp
22	Oconomowoc Lake	East of Oconomowoc at the intersection of STH-16 and Brown St. (CTH-P), north on Brown St. .1 miles to east side intersection with CTH-P (Wisconsin Ave.). East .3 miles to launch. Launch is on the Oconomowoc river and suitable for shallow craft only. Lake is .1 miles down river.	Yes Concrete Ramp (Shallow craft only)
23	Forest Lake	West of Hartland at the intersection of STH-16 and CTH-C, north on CTH-C 1 mile to the N. Frontage Rd., west .2 mile on Frontage Rd. to launch. Parking available at nearby park & ride lot.	No Walk-in
24	Pewaukee Lake (East)	North of Waukesha at the intersection of STH-16 and Capitol Dr., west on Capitol Dr. .3 miles to Oakton Ave., west .3 miles to junction with Main St. Cross Main St. to Park Ave. then west 1 block to launch on north side of road.	Yes Walk-in
25	Nagawicka Lake	West of Waukesha at the intersection of I-94 and STH-83, north on STH-83 .5 miles to Nagawaukee Park entrance on west side of road. Launch located in park. Admission pass required.	Yes Concrete Ramp
26	Pewaukee Lake (South)	North of Waukesha at the intersection of I-94 and CTH-G, north on CTH-G about 1.5 miles to junction with CTH-SS (Prospect Ave.), west on CTH-SS about .8 mile to Lakeview Blvd. East to launch at end of Lakeview Blvd.	Yes Gravel Ramp
27	Pewaukee Lake (West)	West of Waukesha at the intersection of I-94 and STH-83, north on STH-83 .2 miles to CTH-DR junction, east on CTH-DR 1.2 miles to CTH-E, north on CTH-E about 1 mile to launch entrance on east side of road. Fishing pier available.	Yes Concrete Ramp
28	Nemahbin Lake	Located in the Town of Summit. Take I-94 to CTH P and go north on CTH P and immediately go right on DTH DR to the launch.	Yes Concrete Ramp
29	Lower Nemahbin Lake	West of Delafield at the intersection of I-94 and STH-67, south on STH-67 about .5 miles to CTH-DR (DeLafield Rd.) to Sawyer Rd. South on Sawyer Rd. .5 miles to Sugar Island Rd. on east side. Launch is at end of road.	No Walk-in
30	Etter Lake	West of Waukesha at the intersection of I-94 and CTH-G, south on CTH-G .3 miles to Northview Rd., east .5 miles to Cherry Ln., south .3 miles to dirt access road located on east end of lake.	No Walk-in
31	Waterville Lake	East of Dousman at the intersection of STH-18 and STH-67, east on STH-18 1.2 miles to junction with CTH-C (S. Waterville Rd.) Parking is east of intersection on south side of STH-18. Launch is down a short trail below parking. Paddle or walk craft 500 feet up Scuppernong Creek and over a small dam into lake.	No Walk-in (portage)
32	Hunters Lake	From Dousman at the intersection of STH-67 and STH-18, south on STH-67 2 miles to Manor House Rd., east on Manor House Rd., .3 miles to launch on north side of road. Enter at gate.	No Gravel Ramp
33	Ottawa Lake	From Dousman at the intersection of STH-67 and STH-18, south on STH-67 about 6.5 miles to CTH-ZZ, west on CTH-ZZ .2 miles to Ottawa Lake Recreational Area entrance. No motors, fishing pier available.	No* Gravel Ramp *Admission sticker required and available at entrance.

Rustic Roads & Scenic Drives

DRIVE	FEATURES
1 Rustic Road #33 – 12.1 miles – Washington County. Includes portions of St. Augustine Rd., Monches Rd., Emerald Rd., Shamrock Ln., and Donegal Rd. between STH 167, CTH-Q and CTH-K.	This winding, hilly route passes through a natural kettle area, mainly devoted to agriculture, offering views of the church spires atop Holy Hill, a well known seminary in southeastern Wisconsin, and Loew Lake.
2 Rustic Road #10 – 2.5 miles – Waukesha County. Includes portions of CTH-B and Mill Rd. between CTH-P and Main St. in Delafield.	This curving trail rides the narrow isthmus between Upper and Lower Nashotah Lakes and runs south past Upper Nemahbin Lake. The broad fields of Pabst Farms and the remainder of its once famous dairy barns lie to the west. To the north of Mill Road, the red-tiled spires and gables of the Nashota House Seminary grace the horizon.
3 Rustic Road #115 – 2.9 miles – Waukesha County. Waterville Rd. from USH 18 to CTH DR.	This drive offers scenic views of marshland, lakes, and prairies. The route also provides access to the Lake County and Glacial Drumlin Trails and also connects Rustic Roads #10 and #86.
4 Rustic Road #86 – 7.3 miles – Waukesha County. Includes portions of Waterville Rd., Town Rd. G, CTH-ZZ, Strawberry and Piper Roads between USH-18 and STH-59.	This drive offers the traveler scenic views of rugged forest and open prairie as it meanders through the Southern Unit of the Kettle Moraine State Forest. The route also provides access to the Ice Age
5 Kettle Moraine Scenic Drive – 115 miles – Spans the length of the Mid-Kettle Moraine, from the intersection of STH-28 and Kettle Moraine Dr. in the north, to the junction of STH-67 and CTH-22 in the south.	This 115-mile drive traverses six Wisconsin counties. It extends further than shown on the map – north to the Mautee Lake Unit of the Kettle Moraine State Forest in Sheboygan County, and south to Whitewater Lake in southeastern Walworth County. There are numerous places to picnic, hike, camp, bike, swim, fish, visit historical sites, shop and find lodging along the way.

Historical Markers

SITE/LOCATION	FEATURES
1 Lizard Mound County Park – Northwest of West Bend on CTH-A (see Natural Areas & Parks #2)	Over 30 known effigy mounds have been located in Lizard Mound County Park.
2 Great Divide – West of West Bend on south side of STH-33, just west of junction with STH-144.	The Great Divide refers to the the sub-continental divide, separating Mississippi and Great Lakes
3 Richfield Historic Park – In Richfield, at the intersection of STH 167 and STH 164 travel 1 mile North on STH 164 to Pleasant Hill Road and go East .2miles. Park is located on the South side of the road.	Hiking, Picnic Area, Shelter, Restroom and various Historical Buildings including the Messer/Mayer Mill, listed on the Wisconsin State Register and National Register of Historical Places.
4 Historic Okauchee – In Okauchee, on Wisconsin Ave., just west of the Wisconsin Ave. roundabout.	Founded in 1839, Okauchee became a rest stop for travelers heading west, first by foot and later by train.
5 Nashotah Mission – West of Delafield on the corner of Mission Rd. and Mission Ave., a Nashotah House Grounds.	In the mid 1800s, this site was the center of the Episcopal Church's mission in the Wisconsin Territory.
6 St. John's Military Academy – In Delafield on St. John's Rd. west of Genesee St.	St. John's is the oldest military academy in Wisconsin.
7 Delafield Fish Hatchery – In Delafield, on Main St. west of N. Genesee St. (CTH-C).	Constructed in 1907, this spot marks one of the earliest fish hatcheries built in Wisconsin.
8 Lapham Peak – 1 mile south of the I-94/CTH-C intersection in Delafield.	Located in the Lapham Peak Unit of the Mid Kettle Moraine State Forest, this spot marks the highest point in Waukesha County.

Ice Age Trail (IAT)

TRAIL/FEATURES	LOCATION
1 Milwaukee River Segment – 6.8 miles – Trail begins near the Washington/Fond du Lac County line at Kettle Moraine Dr. The trail highlights trailside kettles as it rises and dips through the forest.	Driving: In Kewaskum, at the intersection of USH-45 and STH-28, take USH-45 south 1.9 miles. The trailhead is on the east side of the road. Parking: No parking available at the trailhead. Parking available at the southern end of the Sunburst Ski Area parking lot and Ridge Rd.
2 Northern Kewaskum Segment – 2.1 miles – Trail begins at the Eisenbahn State Trail and travels 2.6 miles southwest through IATA easements and IATA's Otten Preserve before terminating at Ridge Rd.	Driving: In Kewaskum, at the intersection of USH-45 and STH-28, take USH-45 south 1.8 miles to Badger Rd. Turn right on Badger Rd. and go west .3 miles. At Prospect Dr. turn left and go south and west 1.6 miles. Parking: Trailhead parking on the right side of the road. Additional parking available at the southern end of the Sunburst Ski Area parking lot and at a parking area on Ridge Rd. Note: Prospect Dr. becomes Ridge Rd. when it turns to the west.
3 Southern Kewaskum Segment – 1.1 miles – Trail begins at Wildwood Rd. and travels 1.1 miles east and then south along Friendly Dr. before terminating at CTH-D.	Driving: In West Bend, at the intersection of USH-45 and STH-33/144, take USH-45 north 2 miles. Exit at CTH-D and go west .9 miles to Wildwood Rd. Turn right onto Wildwood Rd. and travel .3 miles north. The trailhead is on the east side of the road. Parking: Trailhead parking on east side of Wildwood Rd. Roadside parking at CTH-D.
4 West Bend Segment – 6.8 miles – Trail begins at CTH-D and travels 6.5 miles south through Glacial Blue Hills Recreation Area and into Ridge Run County Park before terminating at Paradise Dr.	Driving: In West Bend, at the intersection of USH-45 and STH-33/144, take USH-45 north 2 miles. Exit at CTH-D and go west 1 mile. Parking: Parking is available at multiple locations along the trail and at Glacial Blue Hills Recreational Area.
5 Cedar Lakes Segment – 2.8 miles – Trail begins at CTH-NN and travels 2.5 miles south through the Polk Kames before terminating at Kettle Moraine Dr. This trail segment offers fantastic views of the Polk Kames.	Driving: In Slinger, at the intersection of USH-41 and STH-144, go north on STH-144 for .4 miles. At CTH-NN turn right and go east .4 miles to trailhead on south side of road. Parking: Parking is available at the trailhead parking area on the south side of CTH-NN.
6 Slinger Segment – 1.5 miles – Trail begins at the intersection of Kettle Moraine Dr. and CTH-AA (Cedar Creek Rd.). Look for the blazes on utility poles that mark the route. This trail highlights the city of Slinger, a city that once served as an important trading center for Native Americans.	Driving: In Slinger, at the intersection of USH-41 and STH-144, go south .5 miles on STH-144 to trail head at CTH-AA (Cedar Creek Rd). Parking: Park on nearby streets.
7 Pike Lake – 3.3 miles – Trail begins at STH-60, heads south along CTH-CC and then continues through the Pike Lake Unit of the Kettle Moraine State Forest before terminating at CTH-E.	Driving: Near Slinger, at the intersection of STH-41 and STH-60, travel 2.5 miles west on STH- 60 to CTH-CC. Turn left onto CTH-CC and travel .2 miles south. At CTH-CC turn left and go west 1.4 miles to the trail access just west of Glassgo Dr. Parking: No parking available at the trailhead. Parking available within the Kettle Moraine State Forest's Pike Lake Unit on Powder Hill Rd. and Kettle Moraine Dr.
8 Holy Hill Segment – 6.9 miles – Trail begins at CTH-E and travels south passing deep kettles, a pine plantation, and continues through the Holy Hill grounds before terminating at Donegal Rd. Trail offers fantastic views of Holy Hill.	Driving: From USH-41 exit onto STH-60 and go west 2.3 miles. At CTH-CC turn left and go south 2 miles. At CTH-E turn right and go west 1.4 miles to the trail access just west of Glassgo Dr. Parking: Roadside parking at Glassgo Dr. Parking is available at Shannon Rd. and at the Holy Hill parking and picnic area on Station Way Rd. Note: The IAT follows the north edge of the picnic area.
9 Loew Lake Segment – 4.9 miles – Trail begins at Emerald Dr. and travels 5 miles south through the Loew Lake Unit of the Kettle Moraine State Forest before terminating at CTH-Q.	Driving: In Hartford, at the intersection of STH-83 and STH-60, take STH-83 south 4.7 miles. At STH-167 go east 1.5 miles. At CTH-K turn right and go south 1 mile to Donegal Rd. Turn left and go east 1.5 miles to Emerald Dr. Turn right and go south .3 miles. Parking: No parking at the trail access. Continue south .5 miles on Emerald Dr. to parking area. Spur trail from the parking lot connects with the IAT. Note: No roadside parking on Washington Co. side of CTH-Q. Roadside parking available on CTH-E in Waukesha Co. or .5 miles east on CTH-Q at DNR parking lot. Additional parking available at a parking area on the east side of CTH-K just north of the county line.
10 Monches Segment – 3.1 miles – Trail begins at CTH-Q near the county line and climbs the bank remnants of a glacial meltwater spillway. The trail features great views of forest progression. It also features areas of unique vegetation as it parallels the Oconomowoc River and wetland area. It ends at the old scenic Kettle Moraine railway bridge on Funk Rd.	Driving: In Menomonee Falls, at the intersection of USH-41/45 and CTH-Q (County Line Rd.), exit on to CTH-Q and go west 11.3 miles. Parking: Please obey the no parking signs at the Ice Age Trail crossing. Roadside parking permitted only on CTH-E, south of the trailhead in Waukesha Co.
11 Merton Segment – 5.2 miles – Trail begins at East Kilbourne Rd.	Driving: In Hartland, at the intersection of STH-16 and CTH-E, take CTH-E north 2.2 miles to where it runs into Hartling Rd. Turn left and continue another 1.8 miles on CTH-E to intersection with East Kilbourne Rd. Turn left and go west .2 miles. Parking: Parking located .1 miles west of the trailhead accessed by a blue-blazed trail. Additional parking is available at multiple locations along the trail.
12 Hartland Segment – 6.8 miles – Trail begins on the west side of Centennial park and winds south along the Bark River. It follows the paved multiuse path through the village of Hartland.	Driving: In Hartland, at the intersections of STH-16 and Merton Ave., travel north on Merton Ave. for .7 miles. At CTH-K (Lisbon Rd.) turn left and go west .2 miles to Centennial Park. Parking: Parking in Centennial Park.

Natural Areas & Parks

	PARK	DIRECTIONS	FEATURES
		Washington County	
1	Kettle Moraine State Forest (Northern Unit - Ice Age Interpretive Center)	Near Campbellsport, at the intersection of USH-45 and STH-67, take STH-67 3.1 miles east. The center is on the northeast side of the road.	biking, birdwatching, camping, canoeing, cross-country skiing, fishing, hiking, horseback riding, picnic area, restrooms, snow shoeing, swimming
2	Lizard Mound	In West Bend, at the intersection of USH-45 and STH-144/33 (W. Washington St.), travel 1 mile east on STH-33 to junction with N. Main St./STH-144. Take STH-144 3.8 miles north to CHT-A. Turn right onto CTH-A and travel 4 miles east. The park is on the south side of the road.	cross-country skiing, hiking, historical marker site, picnic area, restrooms, water *Note: closed Nov. 15th-Mar. 31st
3	Sandy Knoll County Park	In West Bend, at the intersection of USH-45 and STH-144/33 (W. Washington St.), travel 1 mile east on STH-33 to junction with N. Main St./STH-144. Take STH-144 2 miles north to Wallace Lake Rd. Travel east on Wallace Lake Rd. for 1.4 miles. The park is on the north side of the Rd.	cross-country skiing, fishing, hiking, picnic area, playground equipment, sand volleyball, swimming, restrooms, water
4	Glacial Blue Hills Recreation Area	In West Bend, at the intersection of USH-45 and STH-144/33 (W. Washington St.), travel west on Washington St. for 4 miles. At CTH-B (Wildwood Rd.) turn right and travel 1.6 miles north until you reach Beaver Dam Rd. Turn right onto Beaver Dam Rd. Park is on the north side of the road.	hiking
5	Hepburn Woods	In West Bend, at the intersection of STH- 45 and CTH-D, travel west onto CTH-D for .9 miles. At Wildwood Rd (CTH-B) turn left and travel south.5 miles to Beaver Dam Rd. Turn right onto Beaver Dam Rd and travel .6 miles to the parking lot for the Glacial Blue Hills Recreation Area. Trail access for Hepburn woods is across from the parking lot on the south side of Beaver Dam Rd.	cross-country skiing, hiking, snowshoeing
6	Lac Lawrann Conservancy	In West Bend, at the intersection of USH-45 and STH-33/144 (W. Washington St.), travel 1.8 miles east on STH-33 to Schmidt Rd. Turn left onto Schmidt Rd. and travel .8 miles north. The park is on the northeast side of the road.	cross-country skiing, hiking, picnic area, restrooms, water
7	Regner Park	In West Bend, at the intersection of USH-45 and STH-144/33(W. Washington St.), travel 1 mile east on STH-33 to junction with N. Main St./STH-144. Exit onto STH-144 and travel .5 miles northeast. The park is on the west side of the road.	hiking, picnic area, restrooms, water
8	Ridge Run County Park	In West Bend, at the intersection of USH-45 and STH-144/33 (W. Washington St.), take Washington St. .2 miles west to University Dr. Turn left onto University Dr. and travel .5 miles south. The park entrance is on the west side of the road.	cross-country skiing, fishing, hiking, picnic area, playground equipment, sand volleyball, restrooms, water
9	Riverside Park	In West Bend, at the intersection of USH-45 and STH-33/144 (W. Washington St.), take STH-33 east 1.6 miles to N. Indiana Ave. Turn right onto N. Indiana Ave. and travel .5 miles south. The park is on the east side of the road. 43.4042 - 88.1846	canoeing, hiking, picnic area, restrooms, water
10	Quaas Creek Park	Near West Bend, at the intersection of USH-45 and Paradise Dr., travel 1.4 miles east on Paradise Dr. to CTH-G (S. River Rd.). Turn left onto CTH-G and go north 1 mile to CTH-I (Decorah Rd.). Turn right onto Decorah Rd. and travel .6 miles east. The park is on the north side of the road.	canoeing, hiking, picnic area, restrooms, water
11	Gilbert Lake Open Space (DNR Property)	From West Bend, take STH 33 west to STH 144 and travel south on STH 144 approximately 1.5 miles. The site is on the east side of STH 144 approximately .5 miles past Hillcrest Rd noticed to the west. No parking facilities or formal trails. Walk-in access only from STH 144.	hiking, bird watching, firearm & bow hunting and fishing
12	Gregg Preserve/Muthe Woods	In West Bend, at the intersection of USH-45 and Paradise Dr., travel 1.2 miles east on Paradise Dr. to (River Rd.). Turn left onto CTH-G and travel .3 miles north. The park is on the west side of the road.	hiking
13	Henschke Hillside Lake Access	In West Bend, at the intersection of USH-45 and Paradise Dr., travel west on Paradise Dr. for 1.3 miles. At Peters Dr. turn left and travel .3 miles south to the park.	restrooms, water, boat launch
14	Cedar Lake Wayside Park	Near Slinger, at the intersection of USH-41 and STH-144, travel 4 miles north on STH-144 to CTH-NN (Arthur Rd.). Turn right onto CTH-NN and travel 3.5 miles northeast to the intersection of CTH-NN and CTH-Z. The park is located northeast of this intersection.	picnic area, restrooms, water, dog "off-leash" area *Note: closed Nov. 15th-Mar. 31st. The park is located northwest of Little Cedar Lake.
15	Fox Hill (Cedar Lakes Conservation Foundation)	In Slinger, at intersection of STH-41 and STH-144, travel .3 miles north on STH-144 to CTH-NN (Arthur Rd.). Turn right onto CTH-NN and travel 2.6 miles northeast. The park is on the east side of the road. Parking available at the ski lodge and at Klingler Memorial Rock located .2 miles north of the ski lodge.	cross-country skiing, hiking *Note: To help preserve the park, visitors are asked to stay on the path at all times. Annual membership fee required to cross-country ski.
16	Ackerman's Grove Park	Near Jackson, at the intersection of USH-45 and CTH-PV (Pleasant Valley Rd.), travel 1.6 miles west to CTH-Z. Turn right onto CTH-Z and travel .9 miles north. The park is on the west side of the road.	cross-country skiing, fishing, hiking, picnic area, playground equipment, restrooms, sand volleyball, swimming, water, boat launch, soccer fields
17	Hartford Conservation & Gun Club	Near Slinger, at the intersection of USH-41 and STH-60, travel west on STH-60 for 4.3 miles. The Hartford Community Conservation and Gun Club is located on the north side of the road.	archery, hiking, trap shooting
18	Kettle Moraine State Forest (Pike Lake Unit)	Near Slinger, at the intersection of USH-41 and STH-60, travel 3.6 miles west on STH 60 to Kettle Moraine Dr. Turn left onto Kettle Moraine Dr. The park headquarters is on the east side of the road.	camping, fishing, hiking, picnic area, swimming, and a observation tower on Powder Hill, a 1,350- foot glacial kame, offers panoramic views of the park's unique
19	Heritage Trails Park	Near Polk, at the intersection of USH-41 and STH-60, travel .5 miles west to STH-164 (Lovers Ln.). Turn left at STH-164 and travel 2 miles south to CTH-E. Turn right onto CTH-E and travel .3 miles west. The park is on the north side of the road.	cross-country skiing, hiking, picnic area, playground equipment, restrooms, water, soccer fields *Note: closed Nov. 15th-Mar. 31st.
20	Richfield Historic Park	Near Polk, at the intersection of USH-41 and STH-60, travel .5 miles west to STH-164 (Lovers Ln.). Turn left at STH-164 and travel 2 miles south to CTH-E. Turn right onto CTH-E and travel .3 miles west. The park is on the north side of the road.	cross-country skiing, hiking, picnic area, playground equipment, restrooms, water, soccer fields *Note: closed Nov. 15th-Mar. 31st.
21	Richfield Nature Park	In Richfield, at the intersection of STH 167 and STH 164 travel .6 miles north on STH 164. The park is located on the east side of the road.	hiking, picnic area, shelter, restroom, observation deck, horseback riding trails
22	McCann (DNR Property)	From STH 60 in Hartford travel south on CTH K 4.5 miles to Shannon Rd. Go east on Shannon Rd. .25 miles to second turn to a small parking area on the south side of the road.	bird watching & hiking of the Ice Age Trail- a 3/4 mile segment- with views of Holy Hill and prominent kames
23	Schoofs Preserve (Ozaukee Washington Land Trust)	From STH 60 just west of Slinger, travel 4.6 miles south on CTH CC to Shannon Road, follow Shannon Road west 0.3 miles to a small parking lot in the woods on the south side of the road.	hiking trails through woods and wetlands
24	Holy Hill	In Hubertus (northwest of Germantown), at the intersection of USH-41/45 and STH-167 (Holy Hill Rd.), take STH-167 7.6 miles west to Carmel Rd. Turn left onto Carmel Rd. and travel .5 miles south. The park is on the east side of the road.	birdwatching, hiking, observation tower
25	Glacier Hills County Park	In Hubertus (northwest of Germantown), at the intersection of USH-41/45 and STH-167 (Holy Hill Rd.), take STH-167 5.6 miles west to Friess Lake Rd. Turn left at Friess Lake Rd. and travel .3 miles south. The park is on the east side of the road.	cross-country skiing, fishing, hiking, historical site, picnic area, playground equipment, sand volleyball, swimming, restrooms, water
26	Pavcek Preserve (Ozaukee Washington Land Trust)	From the intersection of STH 83 and Holy Hill Road/STH 167, travel 1.7 miles east on Holy Hill Road/STH 167 to CTH K, go south on CTH K 0.7 miles to a small gravel parking lot in the woods on the east side of the road.	hiking trails through woods and wetlands
27	Kettle Moraine State Forest (Loew Lake Unit)	In Hubertus (near Germantown), at the intersection of USH-41/45 and STH-167 (Holy Hill Rd.), take STH-167 west 6.1 miles to St. Augustine Rd. Turn left onto St. Augustine Rd. and travel .8 miles south to Emerald Dr. Turn right onto Emerald Dr. and travel 1.6 miles southwest. The park is on the east side of the road.	glacial landscape hiking along the Oconomowoc River to Loew Lake with views of the Holy Hill Kame and Basillica
Waukesha County			
28	Monches Park	In Menomonee Falls, at the intersection of USH-41/45 and CTH-Q (County Line Rd.), exit onto CTH-Q and go west 11.3 miles. Note: Access to this park is via the Monches segment of the Ice Age Trail. Roadside parking permitted on CTH-E, just south of the CTH-E/CTH-Q intersection. This is also just south of the Ice Age trailhead.	birdwatching, cross-country skiing, hiking *Note: park is undeveloped, all activities are off trail
29	Nashotah Park	In Nashotah, at the intersection of STH-16 and CTH-C (Lakeland Dr.), travel .6 miles north on CTH-C. The park entrance is on the west side of the road.	birdwatching, boating, cross-country skiing, fishing, hiking, picnic area, snow shoeing, sledding, restrooms *Note: Only kayaks, canoes, and electric motor boats are allowed on lake
30	Ryan Park	In the City of Pewaukee, Highway 16 and CTH JK take JK north 0.7 of a mile – small graveled parking lot on east side of the road.	hiking, horseback riding trails, open fields with prairie restorations and a large wooded area
31	Nagawicka Kettle Bog (Waukesha County Land Conservancy)	From Eagle, take STH 59 west 3 miles to CTH Z, go north on CTH Z 3 miles to CTH CI, go east on CTH CI .5 miles to parking lot and boat landing.	Upland grassland with wooded oak shoreline along the lake
32	Hartland Marsh Preserve	In Village of Hartland, take STH-83 North to Cardinal Lane, go east on Cardinal Lane to Cottonwood Ave, go south on Cottonwood Ave. and park in gravel drive.	hiking, bird watching, ancient bur oak trees and vital habitat for song birds, hawks, mink, turtles, and other woodland animals
33	Naga-Waukee Park	Near Delafield, at the intersection of I-94 and STH-83, travel .4 miles north on STH-83. The park is on the west side of the road.	boating, camping, cross-country skiing, fishing, hiking, picnic area, playground equipment, sand volleyball, sledding, restrooms
34	Frog Hollow (Waukesha County Land Conservancy)	In the City of Delafield, access from Lake Country Bike Trail from Park n' Ride lot W of STH-83 & N of I-94.	hiking and bird watching within wetland complex, habitat and breeding ground for muskrat, mink, wading birds, salamanders, turtles, snakes, ducks, and of course, many frogs!
35	Kettle Moraine State Forest (Lapham Peak Unit)	In Delafield, at the intersection of I-94 and CTH-C (N. Genesee St.), travel 1 mile south on CTH-C. Park entrance is on the east side of the road.	biking, birdwatching, camping (reserved walk-in campsite) cross-country skiing, hiking, picnic area, observation tower
36	Wilson Wood Duck Preserve (Waukesha County Land Conservancy)	In the Village of Summit, go .5 miles north of STH-18 on CTH P and park at gate on east side of road.	hiking and bird watching within wetland complex ideal for marsh birds and mammals
37	UW-Waterville Field Station	Near Delafield, at the intersection of I-94 and CTH-P (N. Sawyer Rd.), travel 2.8 miles south on CTH-P to USH-18 (Sunset Dr.). Turn left onto USH-18 and travel .2 miles east to S. Waterville Rd. Turn right onto S. Waterville Rd. and travel .4 miles south. Park entrance is on east side.	birdwatching, hiking, many restored prairies
38	Retzer Nature Center	Near Waukesha, at the intersection of I-94 and CTH-G (Meadowbrook Rd.), travel 2 miles south on CTH-G until you reach STH-18 (Summit Ave.). At STH-18, turn right and travel 1.2 miles west to CTH-DT (Madison St.). Turn left onto CTH-DT and travel .2 miles south. The park entrance is on the southeast side	birdwatching, educational opportunities, hiking
39	Kettle Moraine State Forest (Paradise Valley Wildlife Area- School Section Lake Unit)	From STH 67 in the Village of Dousman, go south on STH 67 2 miles to CTH D. Go south on CTH D 2 miles, to 3 parking areas on south side of road.	Birdwatching and hunting for deer, pheasants, turkey, and waterfowl. Primarily emergent marsh wetlands with wet prairie and wet woods. No developed trails.
39	Kettle Moraine State Forest (Paradise Valley Wildlife Area- Reagons Lake Unit)	From Hwy 67 in the Village of Dousman, go south on STH 67 4.5 miles to parking area on the west side of road.	Mixture of oak savanna, pine plantations, native grasses, wooded wetland, and lowland shrub. Hiking, snowshoeing and hunting for deer, turkey and small game. No developed trails.
39	Kettle Moraine State Forest (Paradise Valley Wildlife Area- Beaver Dam Lake Unit)	From Eagle, take STH 59 west 3 miles to CTH Z, go north on CTH Z 3 miles to CTH CI, go east on CTH CI .5 miles to parking lot and boat landing.	Upland grassland with wooded oak shoreline along the lake. Hiking, snowshoeing and hunting for waterfowl and small game. Birdwatching along the lakeshore. No developed trails.
40	Kettle Moraine State Forest (Southern Unit)	Near Eagle, at the intersection of STH-59 and STH-67, take STH-59 2.7 miles east. The park headquarters is on the south side of the road.	biking, camping, cross-country skiing, fishing, hiking, horseback riding, picnic area, playground, swimming, restrooms, water